



Reproduction center

**KIBA PARK CLINIC**

# We are in this together. We can promise you that.

Infertility may be due a variety of causes.  
Fertility treatment means meticulously investigating  
each potential cause and selecting the best method to  
eliminate whatever is hindering conception.

It can be a long and arduous road to bring  
a new life into the world.

However, we build a close relationship with each of  
our patients and promise that we will do everything in  
our power to maximize the likelihood of conception.

We aim to provide 100% satisfaction.





### Profile

1961 January	Born in Matsuyama City, Ehime Prefecture, male
1986 March	Graduate of Ehime University, College of Medicine
1986 May	Obstetrics and Gynecology Department of Tokyo Metropolitan Police Hospital
1991 August	Ikeshita Ladies' Child Clinic
1992 April	Obstetrics and gynecology specialist
1993 October	Part-time service at Central clinic
1994 July	Special graduate school associate in the First Department of Urology, School of Medicine, Toho University
1997 November	PhD in medicine (male infertility and chromosome abnormality)
1997 November	Award from the Japan Society for Reproductive Medicine (study on the association between congenital absence of the vas deferens and 4F508, which is a cause of cystic fibrosis)
1999 January	President at Kiba Park Clinic
2007 April	Reproductive medicine specialist
2009 December	Clinical genetics specialist
2010 March	Master of Business Administration (MBA)

We put our heart and soul into the medical care we provide.

We treat the man and the woman concurrently. This is the shortest route to conception.

**Atsushi Yoshida**, Director, Kiba Park Clinic  
Specialist in obstetrics and gynecology, reproductive medicine, and clinical genetics. MBA.

see a gynecologist and the man goes to a urologist if he has cause for concern. As I hope you will appreciate, however, the shortest route to conception is to select a clinic where both partners can be diagnosed and receive treatment concurrently.

This is a medical condition that affects both partners. That is why it is essential that the couple have a shared objective.

We treat many couples who have fertility problems, and often encounter cases where they do not have the same objective for their treatment. For example, the woman wants to have a child as soon as possible so she wants in vitro fertilization and micro-insemination, but the man wants to deal with his erectile dysfunction first. It is difficult to get good results when the treatment plan is mismatched like this. It is important that the couple thoroughly discuss the objective of the treatment and what their top priority is.

Kiba Park Clinic opened on January 11, 1999 and specializes in reproductive medicine. A date with a row of ones was chosen for our opening date because we

aim to provide the best fertility treatment in the world. Also, our concept has always been that the doctor provides concurrent treatment for both female and male infertility. People tend to think that infertility is a woman's illness, but that is a huge misapprehension. More than 10% of married couples have an infertility problem;

according to WHO statistics, in about 41% of those cases the wife has a fertility problem, in 24% the husband does, and in 24% they both do. Pregnancy rates are strongly influenced by age. The possibility of conception decreases with age. This is true of both men and women, so time is of the essence. Generally speaking when a couple have trouble conceiving, the woman goes to



We put our heart and soul into the medical care we provide.

## We aim to achieve the best possible result from ART

Although Kiba Park Clinic also treats common infertility issues, many of our patients are suffering from more severe problems and come to us after receiving unsuccessful treatment at other medical institutions. We offer such patients assisted reproductive technology (ART) in the form of in vitro fertilization and micro-insemination. There are six procedures that influence the success of ART treatment: pre-testing, appropriate ovarian stimulation based on the patient's ovarian reserve, egg retrieval, laboratory work, embryo selection and transfer, and luteal phase supplementation.

Any deficiency in these procedures would make it impossible to achieve a satisfactory pregnancy rate. In vitro fertilization (IVF) is a technique that was first performed successfully in 1978 by Dr. Patrick Steptoe, a British gynecologist, and Dr. Robert Edwards, a British research scientist. Micro-insemination was successfully developed in Belgium in 1992, making conception and delivery possible even in cases of severe oligospermia or asthenozoospermia, or when there are very few spermatozoa in the testes. More than 5 million babies around the world have been born thanks to IVF and micro-insemination.

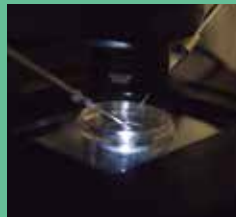


## We do our very best for each patient

Every effort must be made to boost the precision of each of the six procedures and obtain the best possible result from ART. For example, prior to the ovarian stimulation we do tests to gain a detailed understanding of the condition of the ovaries. We then select the best stimulation protocol for the patient. We believe that it is important to select the best out of a wide range of options for each individual case, rather than selecting a stimulation protocol on the basis of the patient's age.

## The sanctity of each embryo

The egg and the sperm do not leave the uterus in the case of a natural pregnancy. In the case of in vitro fertilization and micro-insemination, however, the egg and sperm are taken out of the body to be fused and then returned to the uterus. This requires the utmost care. We look after the embryos in a safe environment that is as stress-free as we can possibly make it. In order to obtain as much information as we can, we have also adopted a state-of-the-art time-lapse system that allows us to observe cell division not



## Physical and emotional well-being



We utilize low-level laser therapy and acupuncture to encourage physical well-being that is conducive to conception by improving blood flow to the uterus and ovaries, and enhancing circulation overall.



The waiting room for acupuncture therapy has an Asian-style decor. Soothing away physical and mental tension is also an effective approach in resolving infertility issues.

We put our heart and soul into the medical care we provide.

as “points in time” but as a continuous “line.” Embryo transfers are performed with a full awareness of the sanctity of each embryo. We are convinced that the combination of our state-of-the-art equipment/systems and the mindful approach of our practitioners improves the chances of conception. Where are eggs and sperm produced? They are, of course, produced within the bodies of a couple. A viable embryo, in other words a source of life, can only be created from a viable egg and sperm. To help improve overall physical health, Kiba Park Clinic has facilities for acupuncture and low-level laser therapy to improve the circulation, as well as an outpatient counter for nutritional supplements.

## Viable eggs and sperm come from physical and mental well-being

Where are eggs and sperm produced? They are, of course, produced within the bodies of a couple. A viable embryo, in other words a source of life, can only be created from a viable egg and sperm. To help improve overall physical health, Kiba Park Clinic has facilities for acupuncture and low-level laser therapy to improve the circulation, as well as an outpatient counter for nutritional supplements.



**Pregnancy is not the goal**

We offer multifaceted treatment, which ranges from encouraging

physical well-being that is favorable for conception to the use of advanced ART, but even when this results in conception, we do not consider that we have achieved our goal. As we see it, the real goal is for the couple and their baby to return home in good health. To reduce anxiety

during the pregnancy, Kiba Park Clinic performs our own prenatal tests, including one to check for chromosomal abnormalities. Some people say that fertility treatment is as stressful as cancer therapy. Kiba Park Clinic has a floor especially for the treatment of secondary infertility. This is because we want to avoid any stress for patients trying for their first child or for patients who bring a small child to the clinic with them. We hope to provide the best support possible for all couples who have decided to try fertility treatment after confirming that they share the same determination and objectives.



Floor dedicated to secondary infertility

“We’re so glad we came here!”  
It will always be our aim to hear those words from all our patients.

## Prenatal diagnosis



The examination room is used not only to collect amniotic fluid for prenatal tests to check for the presence of chromosomal abnormalities, but also to carry out tests to identify the causes of infertility or miscarriages.

## The secondary infertility treatment floor

We have installed a kids’ room on this floor for patients who bring their children with them. Families are free to make use of the room as they wish, for example to enjoy the picture books and toys available there, or to use it as a place to eat.

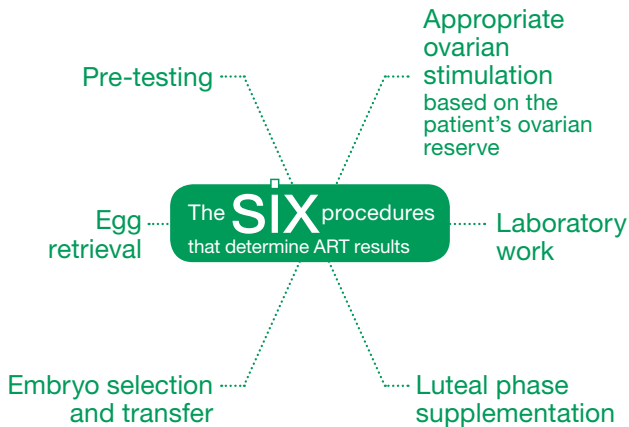




# Prerequisites for successful ART

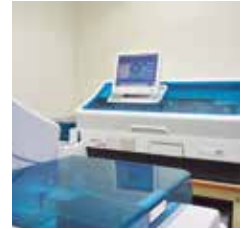
Of the six procedures required to improve ART results, the most important processes are appropriate ovarian stimulation based on an accurate grasp of the patient's ovarian reserve, egg retrieval, laboratory work, and the selection and transfer of the embryo.

Here at Kiba Park Clinic we aim to provide top-class fertility treatment with our state-of-the-art equipment and the meticulous coordination between our doctors, nurses, clinical laboratory technicians, and embryologists.



## ■ Appropriate ovarian stimulation ■

based on the patient's ovarian reserve



Ultrasound tests play an important role in the various processes of fertility treatment, including the basic tests carried out during the first examination. Kiba Park Clinic has a Voluson ultrasound system that can capture high-resolution images, enabling us to boost the precision of the ovarian reserve testing which is essential in order to provide appropriate ovarian stimulation. We also have a hormonal test system that can provide real-time results in around 45 minutes. Egg retrieval is done in the operating room. Guided by the observation of an ultrasound image, a special needle is inserted into the follicle containing the eggs, and follicular liquid is drawn out. Specialist staff known as embryologists immediately inspect it under a microscope to check for eggs.

## ■ Egg retrieval ■



Egg retrieval is done in the operating room. Guided by the observation of an ultrasound image, a special needle is inserted into the follicle containing the eggs, and follicular liquid is drawn out. Specialist staff known as embryologists immediately inspect it under a microscope to check for eggs.

## ■ Laboratory work ■



We have to pass through an air shower to enter the clinical laboratory where eggs and sperm are processed, and where in vitro fertilization and micro-insemination are performed. The lab maintains a level of cleanliness on a par with that required for the manufacture of semiconductors.



Kiba Park Clinic has also installed an IMSI system to boost the precision of our micro-insemination. This system allows us to observe sperm at ultra-high magnification. It enables us to check sperm meticulously at 6000x magnification and select the sperm to be injected into the egg.



Storage room for liquid nitrogen containers. Frozen eggs, sperms and embryos are stored securely, kept safe by a double security system.

## ■ Embryo selection and transfer ■



It is essential to have an accurate grasp of the state of the fertilized egg in order to improve the chance of successful in vitro fertilization and micro-insemination. The time-lapse system automatically takes images of the fertilized eggs being incubated. It is now possible to observe their condition as a continuous line rather than at discrete points.



Before transferring the embryo we show it to the patient on the monitor. We then use ultrasound to carefully ascertain where to position it, and transfer the embryo into the uterus using a catheter.



**Seishinkai Medical Corporation**  
**Kiba Park Clinic**  
**Kiba Park Clinic Branch**

**Information**

Kamei Building 2F, 3F, 5F, 6F, and 7F,  
 2-17-13 Kiba, Koto-ku, Tokyo 135-0042  
 Tel: 03-5245-4122, Fax: 03-5245-4125

Consulting Hours Weekdays: 8:30 - 12:00  
 13:30 - 16:30

6F only on Tuesday and Thursday 13:30 - 18:00

\* Weekday evenings, open for injections until 20:00

Saturday: 9:00 - 14:00

14:30 - 16:00

Sunday (injections only): 9:00 - 13:00

14:30 - 17:00

Closed on Sundays, national holidays (irregular), and over the New Year break  
 Medical services/expertise

1. Female infertility issues
2. Male fertility issues
3. Recurrent pregnancy loss
4. Outpatient sexual function therapy
5. Hysteroscopy
6. Artificial insemination
7. Sperm freezing
8. In vitro fertilization/micro-insemination
9. Embryo freezing
10. Blastocyst culturing
11. Testicular sperm extraction

**Floor guide**

7F Integrative medical care, prenatal tests, research laboratory

6F ART, male fertility examinations

5F Egg retrieval, embryo transfer, clinical laboratory

3F Secondary infertility treatment, outpatient procedures  
 (Hysteroscopy, falloposcopic tuboplasty)

2F General fertility treatment, testicular sperm extraction

**Open seminars**

Our director holds occasional free seminars about ART, male fertility issues, and secondary infertility. Please refer to our website for further details.



The two trees supporting each other in our logo represent the couples who have chosen to try fertility treatment.

**Visits to Kiba Park Clinic**

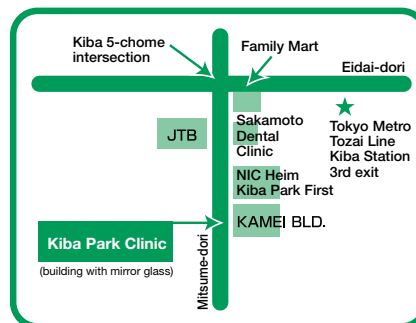
Please make a reservation via the internet before coming to Kiba Park Clinic.

We do not take telephone enquiries about the treatment we provide.

**TEL: 03-5245-4122**

**FAX: 03-5245-4125**

**HP: <http://kiba-park.jp>**



Tokyo Metro Tozai Line Kiba Station  
 (1-minute walk from the 3rd exit)



Medical Corporation Association Seishinkai  
Kiba Park Clinic/Kiba Park Clinic branch office

Kamei building 2F, 3F, 5F, 6F, and 7F,  
2-17-13 Kiba, Koto-ku, Tokyo 135-0042  
TEL: 03-5245-4122 FAX: 03-5245-4125

